



Robin Mackenzie Partnership

Excellence in Acoustics

Offices

50

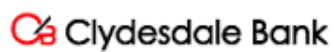


Est. 1969

acoustics energy vibration



Scottish Natural Heritage HQ, Great Glen House, Inverness
Client: Robertson Construction
Image Courtesy of Keppie Design



Robin Mackenzie Partnership

Company Brochure

Having celebrated our 50th anniversary in 2019, the Robin Mackenzie Partnership is one of the UK's largest acoustic consultancies and a leader in its field. Here at RMP we consistently deliver innovative acoustic solutions which our clients value as both robust and cost effective.

We are very proud to have received the Queen's Anniversary Prize 2009 for our work developing the Robust Details constructions used in over 75% of new attached housing in the UK, and of our close association to the Queen's Anniversary Prize 2015 awarded to Edinburgh Napier University for its internationally acclaimed work in timber engineering, sustainable construction and wood science.

Our company brochure gives an insight into the practice and presents examples of developments on which we are proud to have provided the acoustic design.

- Building acoustic design
- Environmental and industrial noise control
- ANC accredited sound insulation testing
- Elmhurst Energy accredited air tightness testing
- Infra-red thermography
- Noise mapping
- Vibration control
- CPD training
- Product development
- Design animation
- Acoustic research



Our dedicated team delivers a high quality client-focused service at a reasonable cost. All RMP consultants are full members of the Institute of Acoustics while our directors hold fellowship status. RMP test engineers are accredited by the Association of Noise Consultants and the Elmhurst Airtightness Testing Scheme (EAS).

The practice has a very low turnover of staff which ensures consistency throughout major long-term projects.

RMP operates from offices throughout the United Kingdom undertaking projects of all sizes, many of national significance. Our research work is internationally recognised and has helped formulate national building regulations. Our client database includes the UK's leading construction companies, architects, product manufacturers, trade bodies and public sector bodies.

Acoustic design of office projects

Whilst in most projects acoustic design plays a supporting role to the structural and aesthetic design, within offices the acoustic design is often at the forefront. RMP Acoustic Consultants have extensive experience in working on all types of office.

Achieving a high level of sound insulation within the offices from the external environment and adjacent offices is very important to ensure a pleasant and productive environment.

We are happy to advise on the refurbishment of existing buildings or new buildings from traditional or modern construction methods.

Acoustic consultancy for offices relates to three main areas:

- Undertaking site noise surveys for your planning application and facade designs.
- Providing design advice for party wall and floors, building services, function rooms and gyms.
- Undertaking testing to comply with Approved Document Part E (England & Wales) and other relevant standards and regulations.

Our areas of expertise include:

- Strong positive working relationship with the project team
- Advising on appropriate noise levels and reverberation times for various activities and room types
- Offering guidance on different criteria and design aspects
- Advising on façade design to provide adequate sound insulation and ventilation
- Offering guidance on the control of plant noise and vibration
- Providing specifications of the acoustic performance of doors, walls and glazed panels
- Zoning 'quiet' and 'noisy' spaces and separating them where possible by distance and 'buffer' spaces such as corridors
- Undertaking compliance testing measurements of ambient noise levels, sound insulation and reverberation time
- Internal acoustic design utilising some of the latest computer modelling software such as Odeon, CadnaA and Insul.

PROJECT: New Office Design

CLIENT: Zurich Insurance Plc

OUR ROLE: RMP were commissioned to provide acoustic design strategy including testing and upgrade recommendations with on-going advice so as to develop a global dynamic working framework applied to other buildings/locations/workspaces.

Our surveys and assessments considered the acoustic performance in terms of the key acoustic indicators including reverberation time, speech intelligibility, attenuation, ambient noise and airborne sound insulation in accordance with relevant Standards and specifications.



Office Projects

PROJECT: Scottish Crime Campus, Lanarkshire

CLIENT: Scottish Ministers, Scottish Government, Police and Community Safety Directorate

ARCHITECT: BMJ Architects

OUR ROLE: RMP provided a full range of acoustic consultancy services throughout the project. The main building is a four storey structure arranged around a central atrium and whilst primarily an office development, the building also provides forensic laboratories and support facilities.

The Crime Campus brings together a number of related agencies and provides accommodation for over 1100 people.



Image Courtesy of Scottish Government

'Scottish Crime Campus image(s) used with permission from the Scottish Government'



Image Courtesy of Morgan McDonnell Architects

PROJECT: Advocate's Close, Edinburgh

CLIENT: Thomas & Adamson

ARCHITECT: Morgan McDonnell

OUR ROLE: RMP were commissioned to provide a full acoustic consultancy service throughout the mixed-use development project that saw nine listed buildings transformed into commercial, office and residential spaces.

Winner of many awards most notably the RICS' National Awards 2015 for "Project of the Year" and "Regeneration Project".

PROJECT: 110 Queen Street, Glasgow

CLIENT: BAM Queen Street Ltd

ARCHITECT: Cooper Cromar

OUR ROLE: RMP undertook a full acoustic consultancy service in relation to the 7-storey new build mixed-use Grade A development offering retail and office space and associated car parking at basement level.

The project sought and achieved a BREEAM "Excellent" rating.



Image Courtesy of Scott Loudon Photography



Image Courtesy of Scott Loudon Photography

PROJECT: Scottish Government, Edinburgh
CLIENT: Scottish Government
ARCHITECT: Robert Matthew Johnson Marshall
OUR ROLE: RMP were commissioned to provide a full acoustic consultancy service throughout the development of the Scottish Government building at Victoria Quay, Edinburgh.

PROJECT: Baillie Gifford, Edinburgh
CLIENT: Ryden LLP
ARCHITECT: Allan Murray Architects
OUR ROLE: RMP were commissioned to provide the full range of acoustic consultancy services when the client relocated their Headquarters to Greenside Row, Edinburgh. We were commissioned thereafter to provide reverberation testing, building services and traffic noise measurements, and design advice for alterations to their conference room with commissioning testing following completion of its renovation.



PROJECT: Clydesdale Bank Plaza, Edinburgh
CLIENT: Cairn Energy Plc
ARCHITECT: Allan Murray Architects
OUR ROLE: RMP undertook acoustic assessment for the refurbishment of the office development at Edinburgh's prestigious Exchange Plaza in the city centre.



Image Courtesy of Scott Loudon Photography

PROJECT: NHS, Waverley Gate, Edinburgh

CLIENT: Doig + Smith

ARCHITECT: Simon Laird Associates

OUR ROLE: RMP undertook measurements of the sound insulation between all rooms within the NHS Lothian's offices at Waverley Gate, Edinburgh and provided upgrade recommendations with on-going advice.



Image Courtesy of Scott Loudon Photography

PROJECT: Goodman E3 Business Park, Edinburgh

CLIENT: Tesco Personal Finance Plc

ARCHITECT: Michael Laird Architects

OUR ROLE: RMP undertook an environmental noise survey in relation to the proposed office development at the South Gyle Business Park, Edinburgh, and advised upon the sound insulation requirements of the office façades.



Image Courtesy of Scott Loudon Photography

PROJECT: Science and Advice for Scottish Agriculture Headquarters, Edinburgh

CLIENT: Scottish Government

ARCHITECT: Parr Architects

OUR ROLE: RMP were commissioned to provide an acoustic consultancy service for the new 11,000sqm headquarters which comprises state of the art laboratories with associated open space, conference facilities, library, staff facilities and 2500sqm of glasshouses. All the cut and fill material was retained on site to create mounding for acoustic attenuation and the project achieved a 'Very Good' BREEAM rating – exceptional for a building on a greenfield site.

PROJECT: RBS World Headquarters, Edinburgh
CLIENT: The Royal Bank of Scotland Group
ARCHITECT: Michael Laird Architects / RHWL Architects

OUR ROLE: RMP provided acoustic consultancy for the award winning world HQ integrated business campus for 3500 staff including leisure, conference, training & nursery facilities housed in new and refurbished buildings throughout the campus. The building's sustainable design principles have achieved an 'excellent' BREEAM rating.

The project won Scottish Design Awards 2006 – Best Commercial Project award.



Image Courtesy of Scott Loudon Photography

Image courtesy of Andrew Lee Photographer



PROJECT: Johnstone Town Hall

CLIENT: BAM Construction

ARCHITECT: Holmes Miller

OUR ROLE: RMP provided a full acoustic consultancy service throughout this iconic £14.5 million project to build a new facility to integrate a range of council services as well as a Police station. The facility includes a multi-purpose Town Hall, Library with McMillan Cancer Support, and community café. 3D modelling of the acoustically sensitive areas was undertaken for BREEAM requirement. Winner of Scottish Project of the Year 2016 at the Royal Institution of Chartered Surveyors (RICS) awards and of the 2016 "Commendation" Civic Trust Awards.

Quatermile, Edinburgh

Client: Gladedale

Architect: Foster and Partners

The £500 million Quatermile project is an extensive redevelopment of the 19-acre site of Edinburgh's old Royal Infirmary near the city centre. Designed by world-renowned architects Foster & Partners, it comprises new residential, commercial and retail quarter which will revitalise this area of the city. New buildings have been incorporated into the existing A-listed Victorian structure to create over 900 apartments, over 30,000 m² of new offices and over 10,000 m² of retail and leisure spaces.

Since 2003 we have been commissioned to ensure this landmark project achieves the highest level of acoustic performance, from the design phase to site inspections and commissioning testing. We have been providing full acoustic services on all new build sections of the site and the refurbishment of the old hospital wards that comprise part of new luxury apartments.



Consulting services

The acoustics market has grown, particularly since the 1990s, due to increasing regulation, population density and expectations of improved building standards. Since the millennium, global warming and energy cost concerns have created a greater awareness of the environmental impact of buildings which has led to tighter regulation. We have embraced this environmental challenge through low carbon impact design solutions and by introducing thermography and air tightness testing services to our portfolio.

We now provide a wide range of acoustic and environment consultancy services, using state of the art measuring equipment and computer software. Our highly qualified consultants guarantee a service of exceptional quality.

Building Acoustics

Acoustic design of auditoria and theatres has always been one of our main services. This is because the necessity of delivering good acoustics inside such buildings has long been recognised.

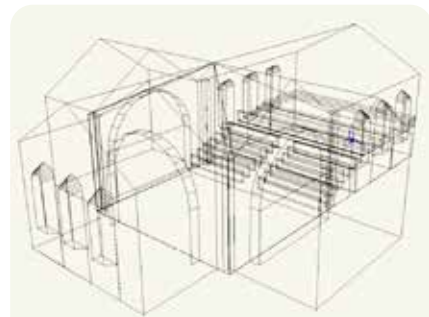
With the introduction of new technical guidance documents relating to schools, hospitals, offices and commercial premises (BB93, HTMo8-01, BCO, BREEAM etc) the need for good internal acoustics is now an issue for most architectural developments.

RMP has a wealth of experience in sound insulation, reverberant noise control and control of services noise. Our clients rely upon us to provide robust and cost effective design solutions which consistently achieve the design standards.

We have the experience to meet every architectural acoustic challenge – from the design of atria, school halls, court rooms and multipurpose spaces through to concert halls, exhibition centres and special needs schools. We achieve the very best results through a combination of experience, the latest computer modelling techniques (AutoCad, Odeon and CadnaA) and a full suite of on-site testing services.

Areas of expertise:

- Offices, hotels, commercial - BS8223, BCO guide
- Enhanced Housing Performance Code for Sustainable Homes, BRE Environmental Assessment Method (BREEAM), Robust Details
- Schools - BB93
- Hospitals - HTMo8-01
- Calculation of sound insulation
BS EN ISO 717, BS EN ISO 12354
- Design to Part E England and Wales
- Design to Section 5 and 7 Scotland
- Technical Booklet G/G1 Northern Ireland
- Public house and night club noise assessment
- Cinemas and leisure complexes
- Theatres and concert venues
- Museums and visitor attractions



Odeon wireframe acoustic model

Sound Insulation - Testing and Diagnostics

RMP were one of the first companies in the UK to undertake sound insulation testing back in the late 1960's. Over the years we have built up an unrivalled wealth of experience in sound insulation and building acoustic design. We draw upon this experience when providing a coustical services for the refurbishment of existing buildings or the design of new buildings. As a result, our expertise in this area is now internationally recognised. Our staff have provided research guidance and technical support to government institutions and organisations from the UK to New Zealand.

RMP is registered on the Association of Noise Consultants Acoustic Tester scheme. This accredits RMP to undertake sound insulation testing for Part E, Section 5, Code for Sustainable Homes, BRE Environmental Assessment Method (BREEAM) rated developments for new build residential. We also regularly undertake sound insulation testing in schools, hospitals and office developments.

Our work ranges from small developer buildings and flat refurbishments through to multi- million pound residential flagship developments such as Quatermile in Edinburgh and the Great Northern Tower in Manchester.

The practice also specialises in the assessment of acoustic defects, providing invaluable advice to clients who require to remedy complex acoustic insulation problems which can occur in new build developments, refurbishment projects or in response to resident complaints.

We consider the provision of good, economical and practical design advice to be our business. This is why we provide technical guidance and recommendations, when needed, as part of our core service.

Areas of expertise:

- Offices, hotels, commercial - BS8223, BCO guide
- Enhanced Housing Performance Code for Sustainable Homes, BREEAM, Robust Details
- Schools - BB93
- Hospitals - HTMo8-01, HBN 12-01 Sup C
- Sound insulation testing on site (airborne and impact) - BS EN ISO 140, ANC registered, Robust Details inspectors, IOA Good Practice
- Reverberation time measurements - BS EN ISO 3382
- BS5363 – auditoria reverberation measurements
- Testing to Part E England and Wales
- Testing to Section 5 Scotland
- Public house and night club noise assessments
- Cinemas



Spot the scaffolding clamp!

Environmental Noise

Environmental noise covers a wide range of sources however, this is predominantly unwanted noise from transportation, construction and industrial activities. Increasingly governed by a variety of regulations, most new and existing noise sources now require assessment and mitigation. Requirements for assessment are diverse, but typically result in the assessment of the existing noise environment and the impact on the environment of constructing a new road, factory or wind farm etc.

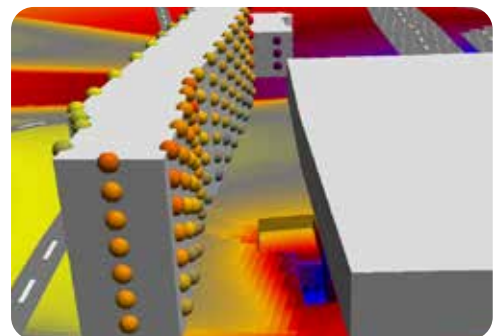
RMP assesses environmental noise sources against the specific criteria provided by local authorities, including the stringent inaudibility criteria. We carry out environmental impact noise assessments in support of planning applications and in response to noise abatement notices. We combine our extensive environmental impact experience with the latest calculation and mapping software to produce innovative and cost effective mitigation solutions for the most complex of projects.



Our directors and senior consultants frequently provide expert advice to Planning Inquiries and Parliamentary Inquiries such as The Edinburgh Tram inquiry. We are also frequently consulted on amendments to environmental noise planning guidelines.

Areas of Expertise:

- Environmental Measurements - BS 7445, WHO Guidance
- Planning and Noise - PAN 1/2011, NPPF
- Noise and Vibration from Mining - PAN 50
- Construction Noise and Vibration - BS 5228
- Motor Sports Code of Practice on Noise from Organised Off-Road Motorcycle Sport 1994, Auto Cycle Union (ACU) Maximum Permitted Sound Levels
- Shooting Ranges/Galleries - BS EN ISO 172001
- Sports Grounds
- Road Traffic Noise, existing and new roads - CRTN, NISR, DMRB, PAN 56, PPG 24
- Rail Noise - CRN, BS 6427, BS 14837, BS 8041, PAN 56, PPG 24
- Aircraft Noise - BS8233, WHO, Noise Contours (civil and military)
- Industrial Noise - BS 4142
- IPPC Assessments
- Workplace Noise Assessments - HSE
- Low noise work environments - BS 11690
- Wind farm - ETSU R 97, IOA GPG
- Concert noise, noise council code of practice



CadnaA plant noise predictions on a residential façade

Vibration



RMP provides expert advice on vibration measurement and analysis. Our comprehensive engineering advice on problem resolution takes into account the long-term structural integrity and enhanced engineering performance. Our consultants are members of the Institute of Acoustics and The British Institute of Non Destructive Testing and are experienced in planning, collection, analysis, and interpretation of ground-borne vibration data.

We undertake vibration measurement and analysis on new residential developments – at railway track-sides, alongside highways (both urban and rural), in tunnels (both road and rail), on piled foundation construction sites, and across a broad spectrum of commercial and retail developments. We regularly act as expert witnesses in planning inquiries and insurance claim resolutions. The latter includes site vibration assessment, data synthesis and analysis to assist dispute and claim resolution.

We strongly recommend that vibration testing be carried out on development sites at an early stage, before it becomes an expensive post-completion problem. This allows our expert team to provide tailored advice which can significantly reduce the risk of failure following completion. It can also reduce the level of material and remedial measures necessary to meet vibration isolation guidelines.

Areas of expertise:

- Offices, hotels, commercial & retail developments
- Housing, mixed-use residential/retail/commercial, schools & colleges, vibration isolated laboratories & plant/machine rooms
- In situ vibration testing (air- and ground-borne): rail, road, bridge, and tunnel sites
- Piled foundation installation vibration assessment
- PPV, VDV, and rms acceleration measurements: time and frequency domain analysis
- Assessment to BS 6472 Guide to the evaluation of human exposure to vibration in buildings (1 Hz to 80 Hz)
- Assessment to BS 7385 Evaluation and measurement for vibration in buildings
- Assessment to BS 5228 Noise and vibration control on construction and open sites
- Compliance checking to The Control of Vibration at Work Regulations 2005
- Blast induced and other sources BS 6427
- Ground Borne Vibration from Rail BS 14837
- Human Response BS 8041
- Hand arm vibration assessment
- Whole body vibration assessment

Air Tightness Testing

Air tightness testing is increasingly being requested by private developers, housing associations and social landlords, as a means of checking the energy performance and workmanship of dwellings. Unwanted air infiltration can account for up to 20% of a building's heat loss and reduces occupant comfort via draughts.

RMP provides a 'one-stop' consultancy service for both sound insulation and air tightness, simplifying the design and completion phases of a project.

We carry out air tightness testing for the domestic market using Elmhurst Airtightness Testing Scheme (EAS) accredited testers required for Part L1 England and Wales Building Regulations compliance testing. We also undertake commercial air tightness testing (volume dependant) and provide consultancy advice on design and detailing. The tests are conducted to the Air Tightness Testing Measurement Association's Technical Standard 1 (ATTMA TS1).

Areas of expertise:

- EAS accredited domestic air tightness testing to ATTMA TS1 requirements
- Part L complaint testing for the England and Wales Building Regulations
- Section 6, Energy, complaint testing for the Scottish Domestic Technical Standards
- Commercial air tightness testing
- Building fabric systems in relation to air tightness
- Design, detailing and construction consultancy services for air tightness
- Pressure loss diagnosis using building smoke testing and thermography



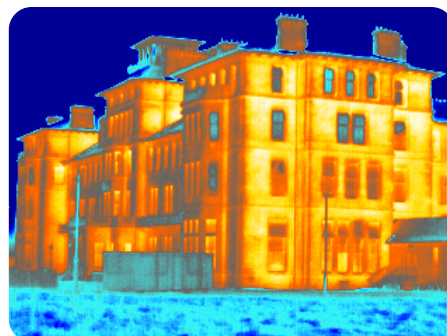
Infra-red thermography

Thermal imaging (or infra-red imaging) captures thousands of surface temperature measurements and converts them into an image. The service can identify air leakages, badly insulated areas and other construction problems. Therefore, it is often complimentary to air tightness testing. Thermal imaging has a wide range of applications in the building industry.

RMP operates a range of thermal imaging infra-red cameras to support our professional diagnostic services, software and detailed reporting. Our experience spans a wide range of activities.

Areas of expertise:

- Infra-red imaging of domestic dwelling
- Complex detailing of building envelope
- Evaluation of process energy system
- Diagnosis of building envelope defects
- Diagnosis of building pathology
- Assessments of energy heat loss



Directors

Professor Robin Mackenzie

BSc (Hons), MSc, PhD,
CEng, FIOA, FRSA



Professor Robin Mackenzie was educated at Heriot-Watt University, the University of Edinburgh and the Massachusetts Institute of Technology. He is a fellow and past member of the Council of the Institute of Acoustics and the American National Science Foundation. Winner of The Institute of Acoustics Tyndall Medal in 1980, Robin was awarded the Royal Society Industrial Fellowship in 1992.

Robin has lectured extensively throughout the world on the subject of sound insulation and auditorium acoustics. He has been acoustic consultant for the Royal Scottish Academy of Music and Drama in Glasgow, the Edinburgh Conference Centre in Riccarton, The National Library of Scotland and The Queen's Hall in Edinburgh. He has also offered his expert advice on the lecture facilities at five of Scotland's universities.

His previous roles have included Dean of the Faculty of Engineering & Computing, and Vice Principal for Knowledge Transfer at Edinburgh Napier University.

Richard Mackenzie BSc, FIOA, MInstSCE



Educated in Building Engineering at Edinburgh Napier University and Applied Acoustics at Sheffield-Hallam University, Richard joined RMP in 1993. Richard has extensive experience in major building acoustics projects. These include the 2001 Stirling Prize winning Magna Project in Rotherham, the 2008 RIBA Prize winning Scottish Storytelling Centre in Edinburgh, Great Northern Tower in Manchester and Great Glen House in Inverness – Sustainable Building of the Year 2006.

Richard is adept at offering expert evidence during planning enquiries relating to environmental noise impact. He recently gave evidence at the Scottish Government Parliamentary enquiry for the Edinburgh Trams project.

RMP's principal consultant and business manager, Richard has significant experience of project management, particularly large scale contracts. He was Joint Project Manager on the House Builders Federation Robust Standards Details Project and is co-author of 'Housing and Sound Insulation'. One of RMP's three Robust Detail inspectors, Richard is an examiner on the Association of Noise Consultants (ANC) Members Registration Scheme and sits on the ANC board. In 2008 he was awarded Fellowship of the Institute of Acoustics and sits on the IOA council.

RMP works in partnership with Edinburgh Napier University's Institute for Sustainable Construction bringing together a wide range of specialist expertise in construction innovation.



**Institute
for
Sustainable
Construction**

**Construction technologies
for tomorrow's communities**

Our primary research and innovation support centres include:

Building Performance Centre
Centre for Geotechnics
Centre for Offsite Construction and Innovative Structures
Robin Mackenzie Partnership
Scottish Energy Centre
Centre for Sustainable Communities

www.napier.ac.uk/isc

OFFICES

Head Office Edinburgh

Unit 1, 7Hills Business Park
37 Bankhead Crossway South
Edinburgh
EH11 4EP

0345 062 0000

South West
17 Bishops Close
Torquay
Devon
TQ1 2PL
07908 144954

South East
The Officer's Mess
Royston Road
Duxford
Cambridge
CB22 4QH
07592 104564

rmp@napier.ac.uk

www.rmp.biz

 [@RMPsoundtesting](https://twitter.com/RMPsoundtesting)

Disclaimer

In the preparation of this collection of work we have, where possible, credited photographic copyright.

